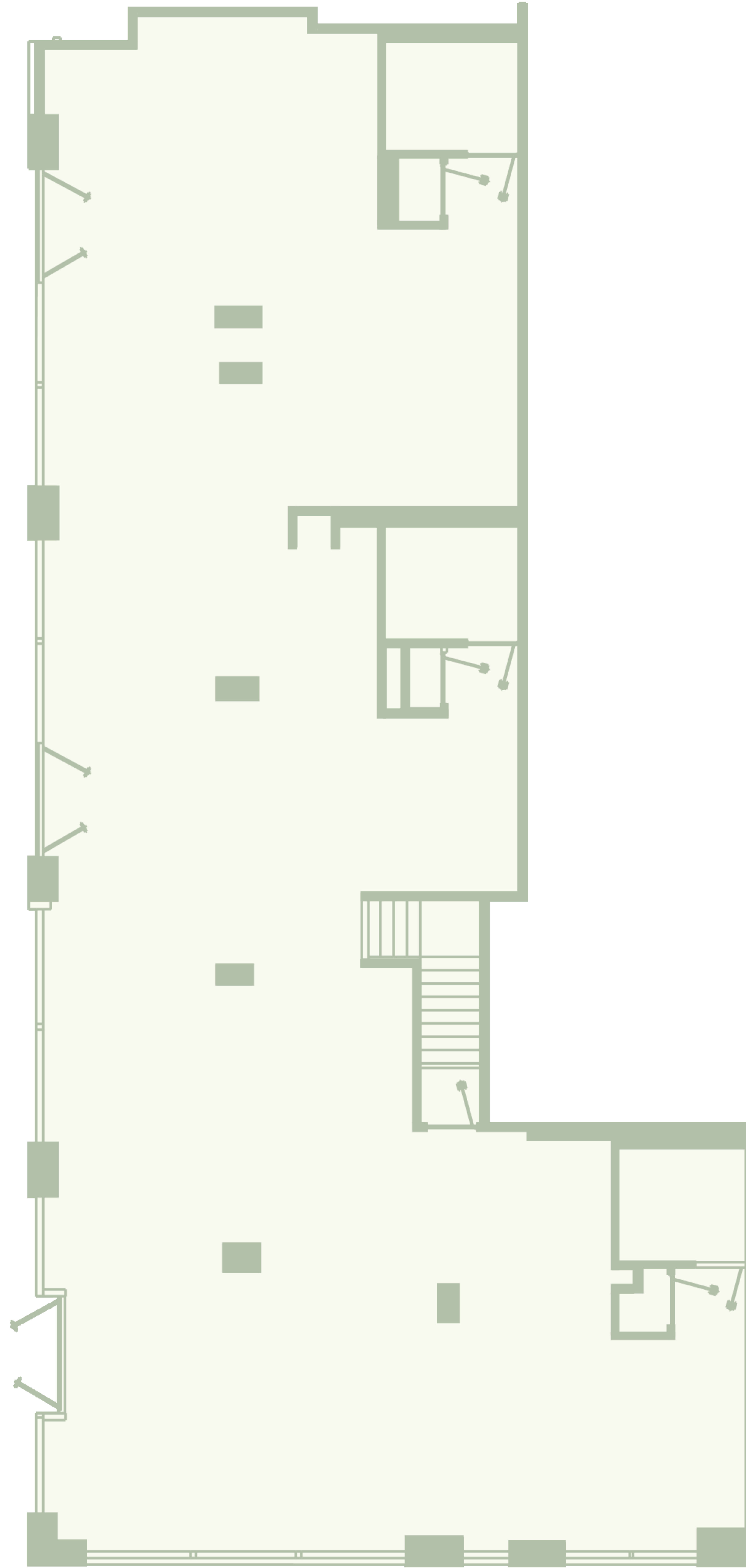


613 4th Avenue

3,172 sqft

4TH AVENUE

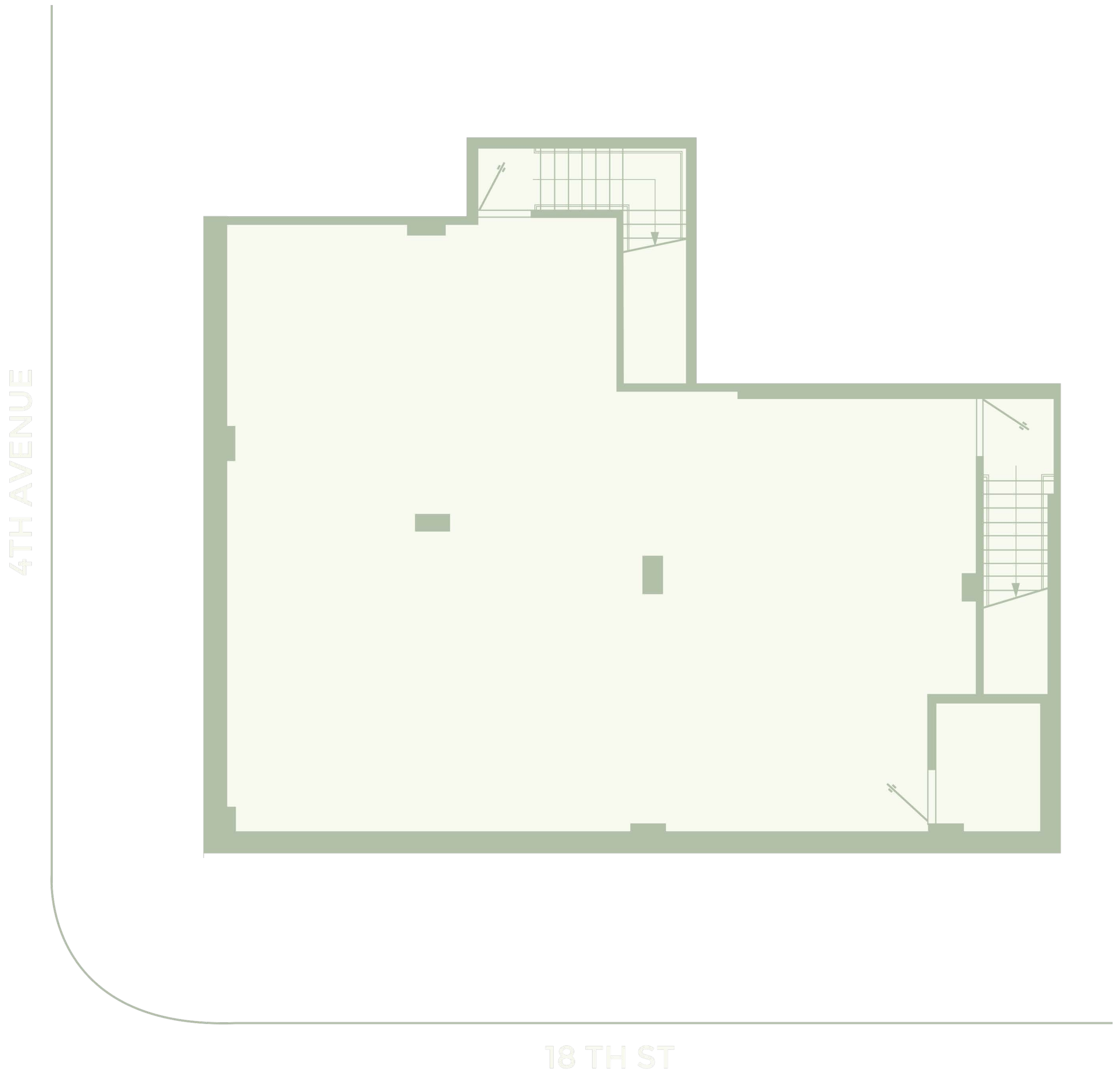


18TH ST

613 4th Avenue

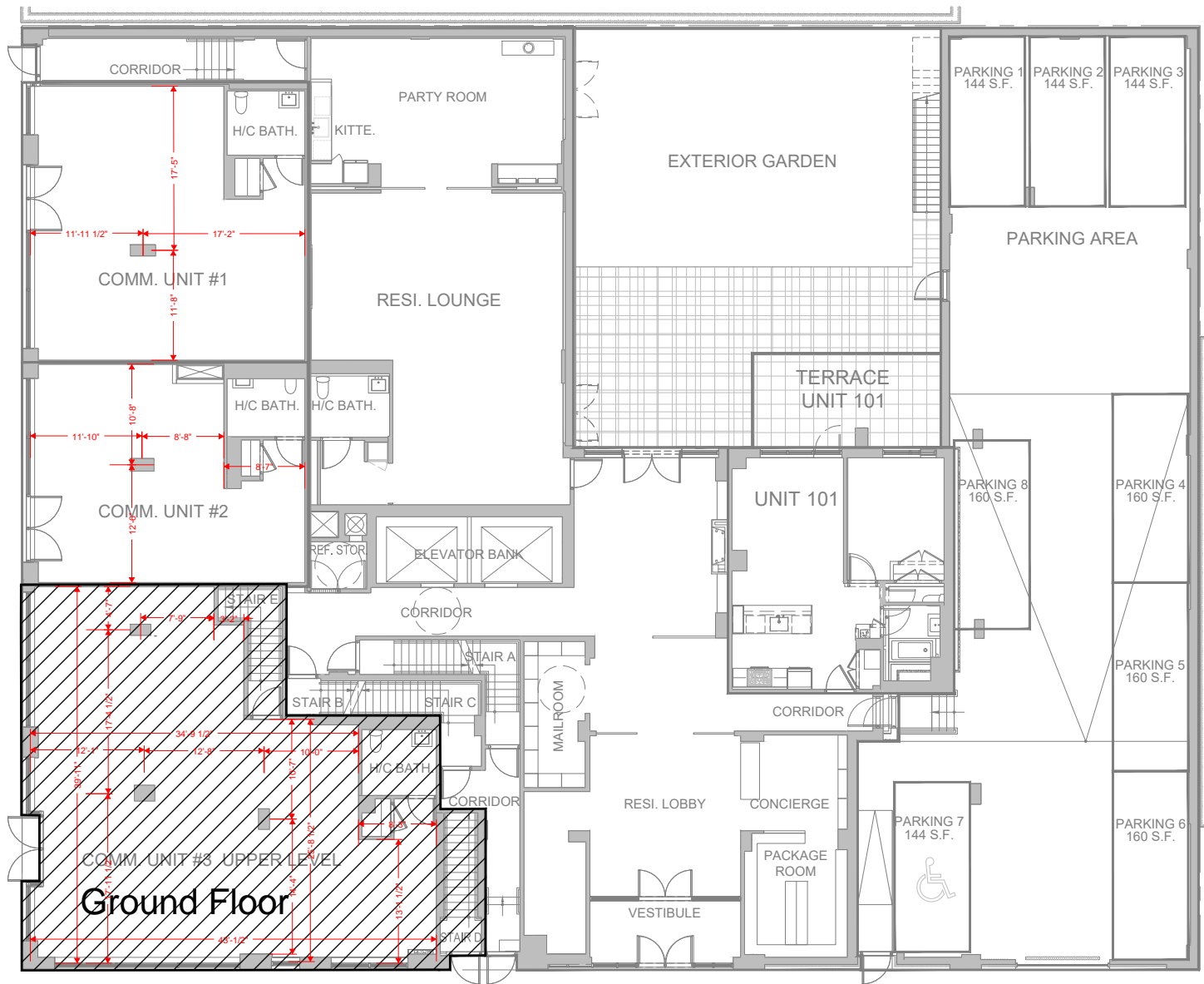
Corner Retail Space

1.633 SF





4th Ave

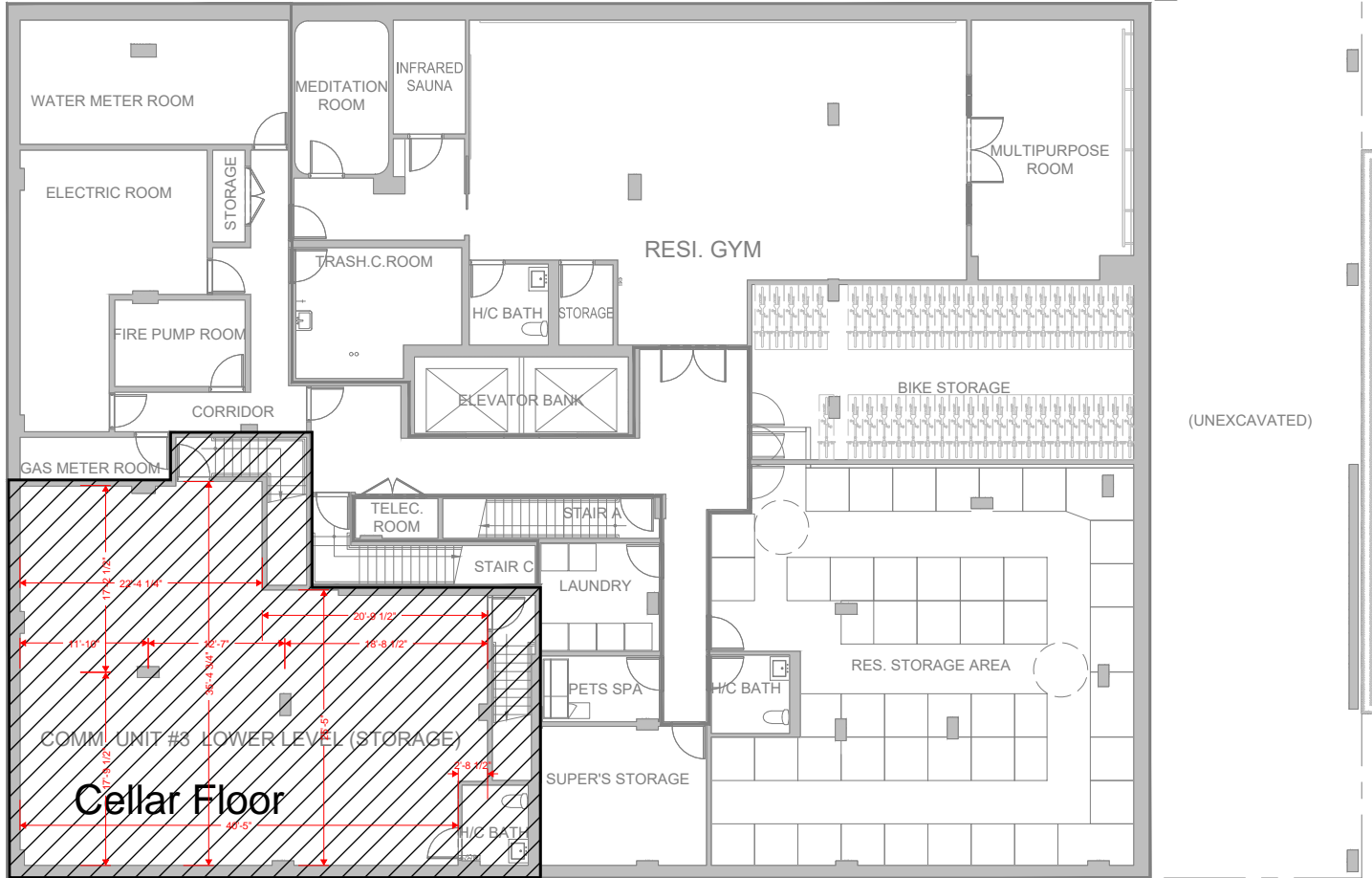


Ground Floor

18th Street



(UNEXCAVATED)



4th Ave

(UNEXCAVATED)

COMM. UNIT #3 LOWER LEVEL (STORAGE)

Cellar Floor

SOUTH SLOPE BLISS, LLC

613 4TH AVENUE CONDOMINIUM

613 4TH AVENUE, BROOKLYN, NY 11215

BRENT M. PORTER ARCHITECT & ASSOC.

DATE: FEBRUARY 2018

CELLAR

ALL DIMENSIONS ARE MAXIMUM AND ARE MEASURED FROM DRYWALL TO THE OPPOSING DRYWALL OR THE OPPOSING FACE OF THE KITCHEN ISLAND AS APPLICABLE, AND ARE TAKEN APPROXIMATELY THROUGH THE CENTER OF EACH SPACE. DIMENSIONS INCLUDE COLUMNS, SILLS AND FURRED OUT MECHANICAL SYSTEMS, EXCLUDING CLOSETS AND CUTOFFS AND SUBJECT TO NORMAL CONSTRUCTION VARIANCES AND TOLERANCES. PLANS AND DIMENSIONS MAY CONTAIN MINOR VARIATIONS FLOOR TO FLOOR. SQUARE FOOTAGE IS MEASURED IN ACCORDANCE WITH THE OFFERING PLAN AND EXCEEDS THE USABLE FLOOR AREA. SPONSOR RESERVES THE RIGHT TO MAKE CHANGES IN ACCORDANCE WITH THE OFFERING PLAN.

18th Street

SCALE: 0' 8' 16' 24'